



# Cellebrite

Digital intelligence  
for a safer world

## Remote Examination Machine Access

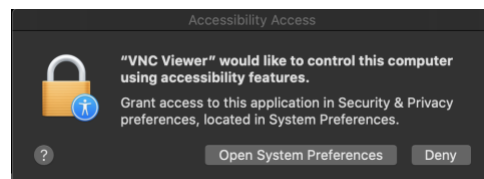
Note – Virtual machine log in information will be provided when you join the meeting.

### macOS and Windows platform (variations for macOS noted)

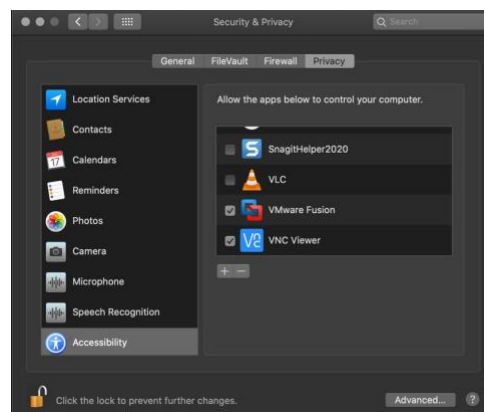
1. Download and install RealVNC Viewer for your operating system platform - <https://www.realvnc.com/en/connect/download/viewer/>

- a. *macOS only* – additional configuration

- i. When launching, you will get an Accessibility Access Prompt. Click **Open System Preferences**



- ii. Click the padlock in System Preferences, authenticate and check VNC Viewer to allow Accessibility options



2. Start VNC Viewer and add the provided **IP/DNS:port** and click **Enter**  
(Sample IP/DNS:port shown – IP/DNS:port will be provided one hour before the start of the first day of class as you log into the classroom meeting)

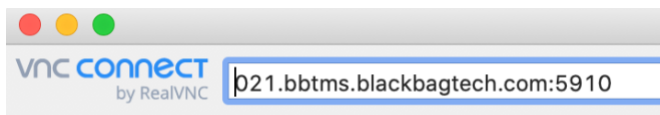


# Cellebrite

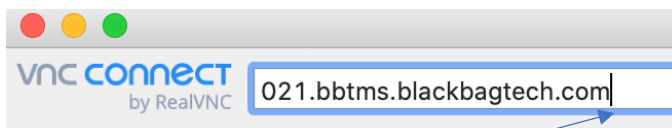
Digital intelligence  
for a safer world

(continue below)

## Correct Example:

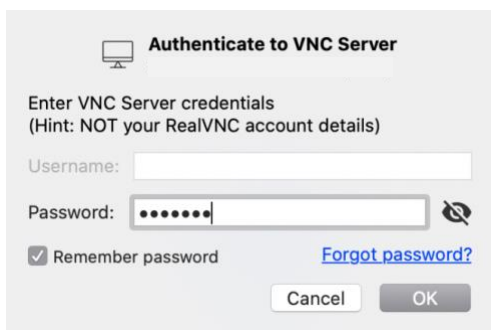


## Incorrect Example:



Fix by adding the port as seen in correct example above

## 3. Enter provided password VNC password



## 4. You will see the desktop of your remote machine

VNC Connections may affect the mapping of certain keys on your keyboard. To ensure the best experience in the course please be aware of the following for windows keyboards and set the following key maps for macOS. These settings are located on the machine where you installed VNC Viewer.



# Cellebrite

Digital intelligence  
for a safer world

(continue below)

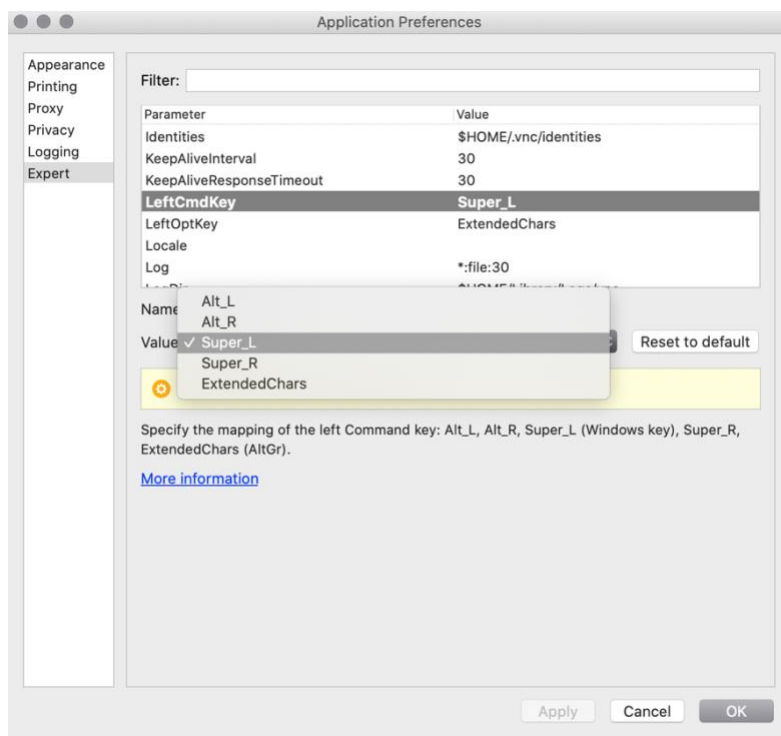
Windows:

- The Apple Keyboard CMD key is the Windows key

macOS:

Click VNC Viewer-Preferences-Expert

- Map keyboard to the Left Apple Command key (CMD).
- Scroll or Filter to **LeftCMDKey** and select the **Super\_L** option in the drop-down menu and hit **OK**



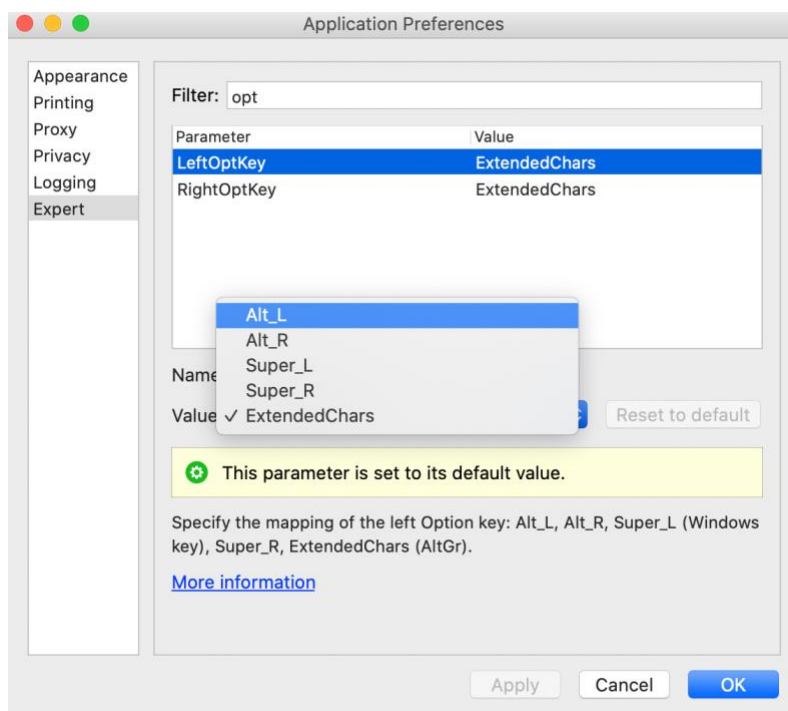


# Cellebrite

Digital intelligence  
for a safer world

(continue below)

- Map keyboard to the Left Apple Option key (CMD).
- Scroll or Filter to **LeftOptKey** and select the **Alt\_L** option in the drop-down menu and hit **OK**



Restart any VNC connections.

Contact [virtual\\_training@cellebrite.com](mailto:virtual_training@cellebrite.com) or open a [Training Support Ticket](#) for further assistance.